

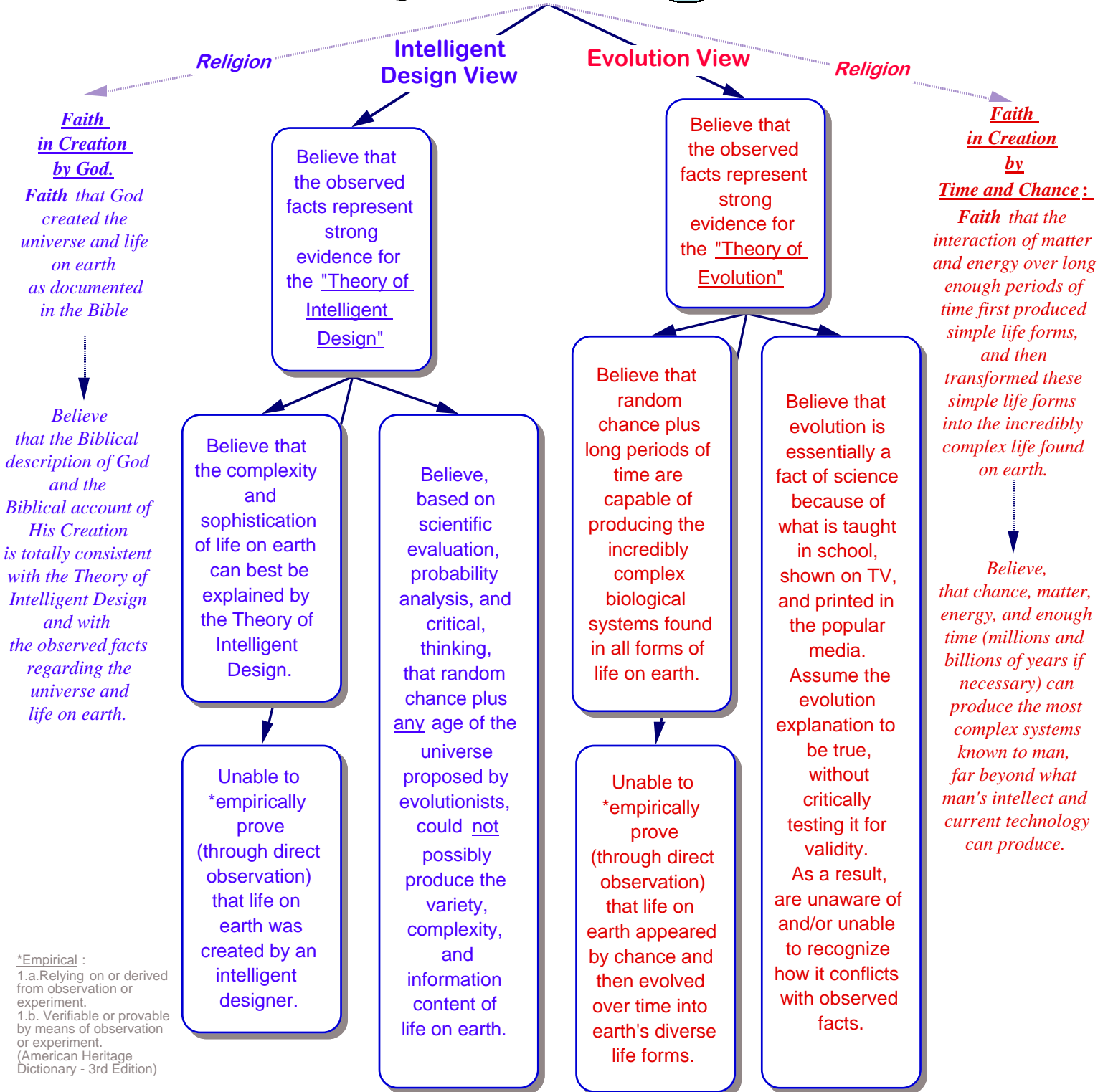
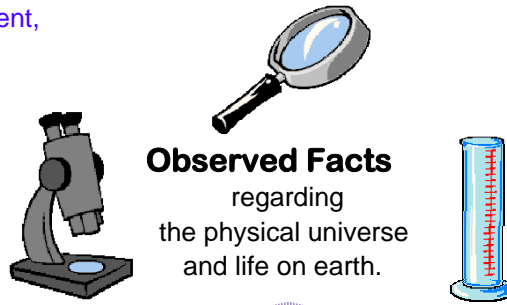
# Theory of Intelligent Design:

Proposes that since life on earth reflects both highly sophisticated biotechnology and incredibly complex information content, it can only be the result of intelligent design .

vs.

# Theory of Evolution:

Proposes that life on earth originated through the chance formation of life from non-living matter. It also proposes that simple life forms changed into complex life forms through the accumulation of advantageous random mutations over long periods of time.



## **MindEquip**

Copyright © 2008 by Barney O. Browne

All rights reserved. Printed in the USA.

Permission is granted to all to freely copy and distribute this document under the condition that it remains unchanged and is given away for free.

This document can be viewed and downloaded for free at

**[www.mindequip.com](http://www.mindequip.com)**